

Participatory Research

Raj Pandya

UCAR SOARS & Community Building Program

AAAS Climate Literacy Conference

17-18 February 2008



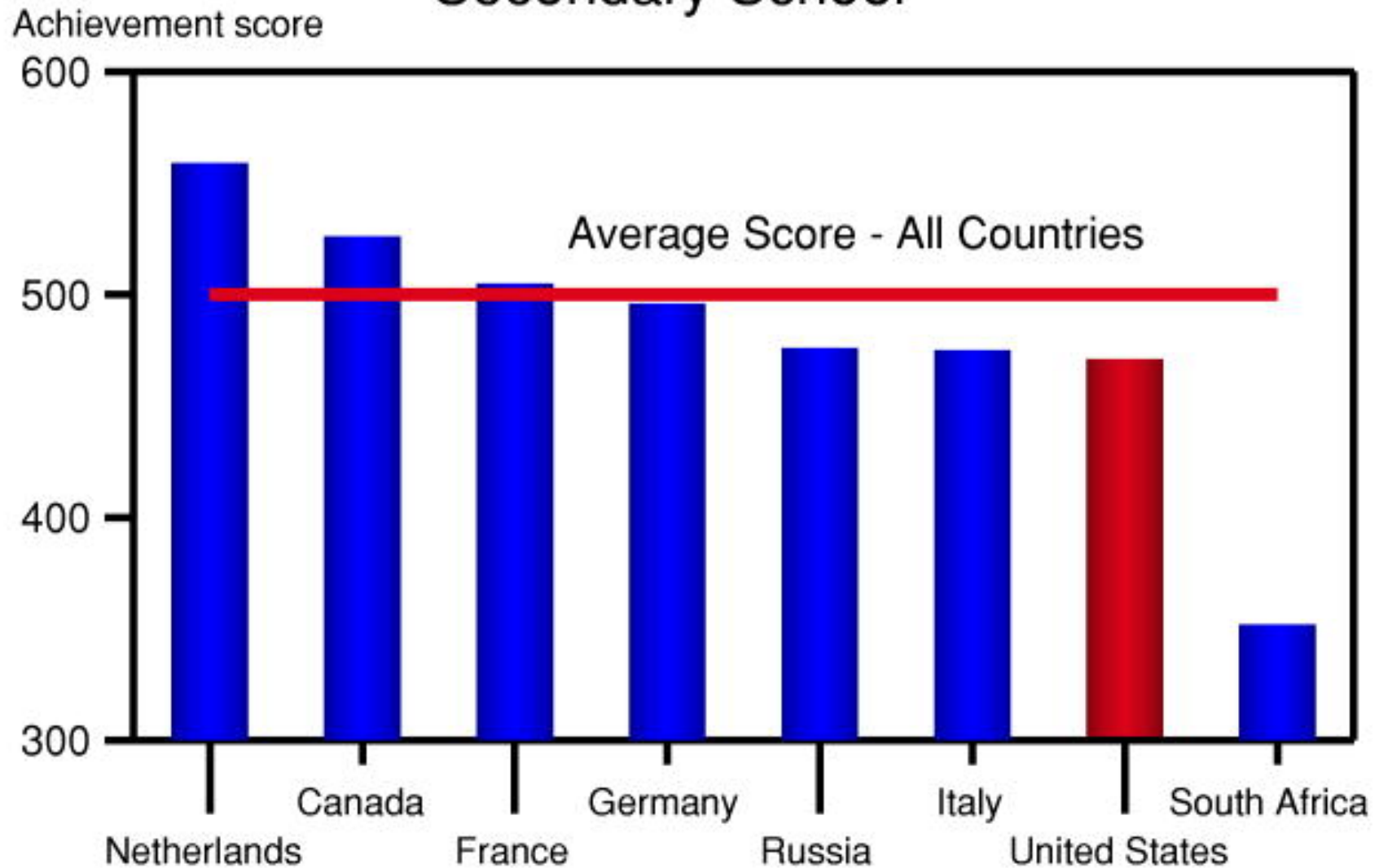
Three Related and Persistent Problems

- 1. A gap between atmospheric research and societal use**
- 2. Poor climate and STEM literacy**
- 3. Continued lack of minority participation in climate science**

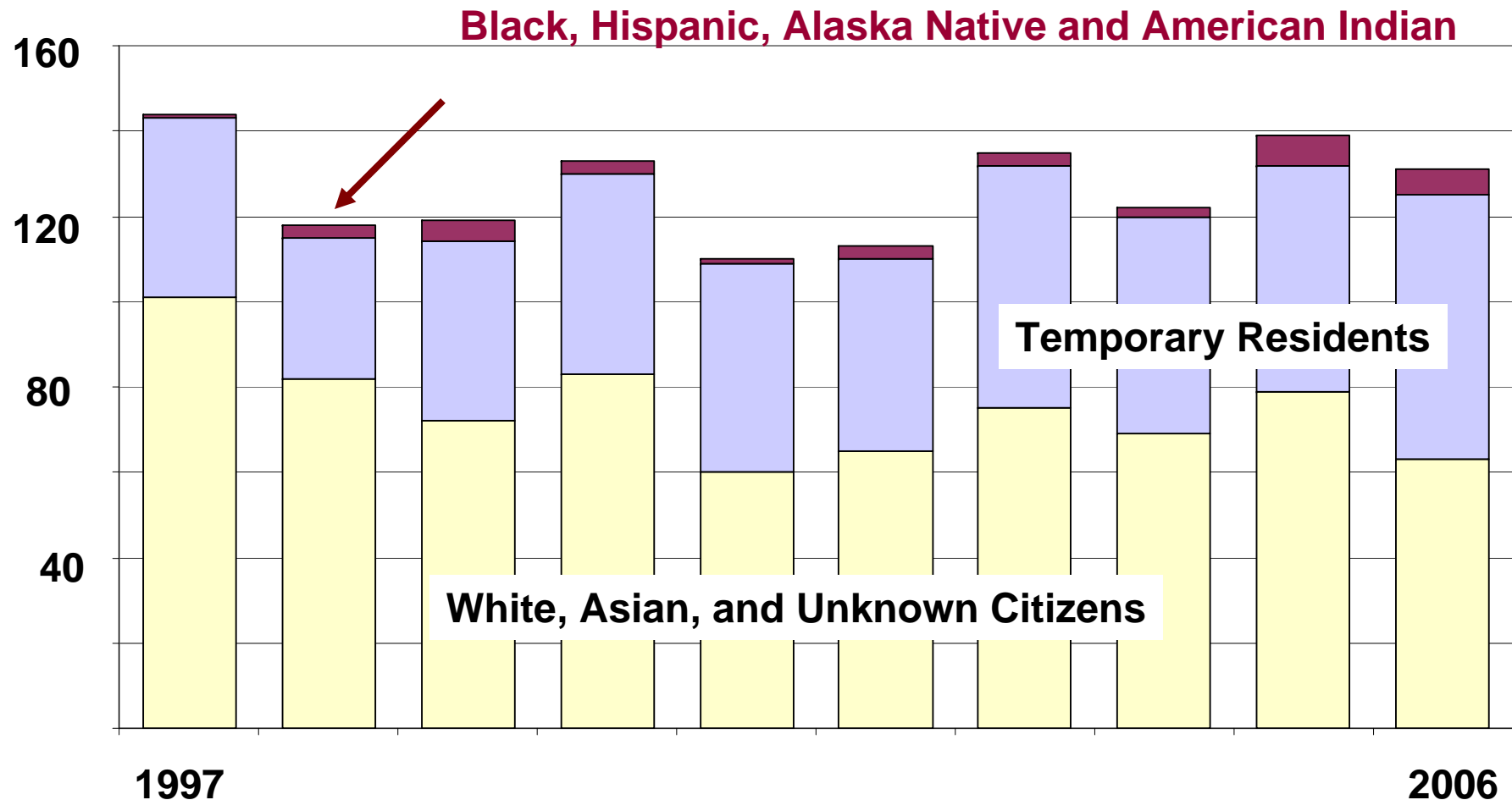


Victor H. Rivera-Monroy and Robert R. Twilley

Math and Science Literacy in Final Year of Secondary School



PhDs in Atmospheric Sciences by Race/Ethnicity and Citizenship



[1] Chart made from data at National Science Foundation, Division of Science Resources Statistics. 2010 *Science and Engineering Degrees, by Race/Ethnicity of Recipients: 1997–2006*. Detailed Statistical Tables NSF 10-300. Arlington, VA. Available at <http://www.nsf.gov/statistics/nsf10300/>.

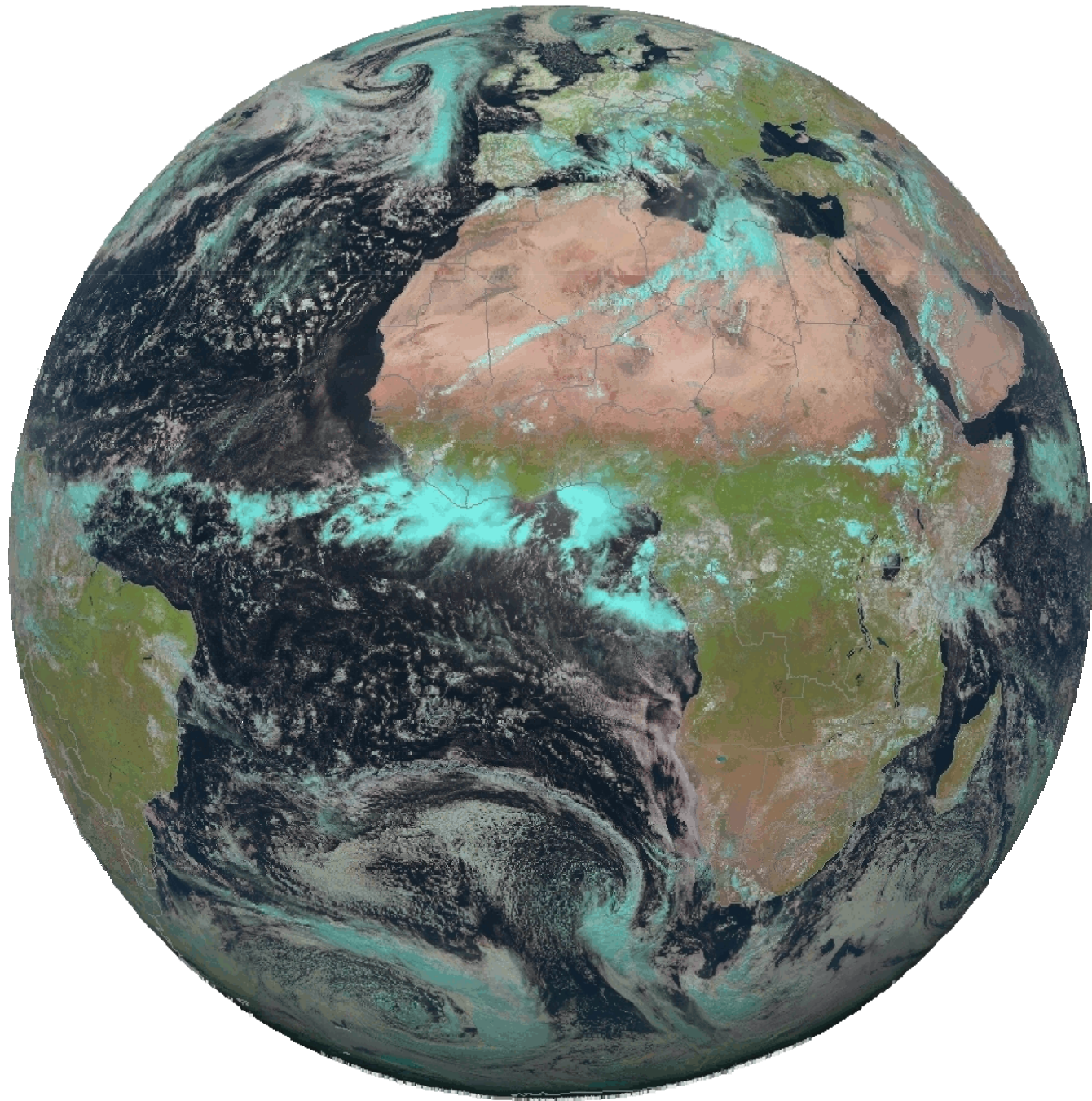
Participatory Research

“Collaborative approach to research *that equitably involves all partners in the research process* and recognizes the unique strengths that each brings...*begins with a research topic of importance to the community with the aim of combining knowledge and action*”



Israel, Barbara, Eng, Eugenia, Schulz, Amy J., Parker, Edith A., eds.
Methods in Community-Based Participatory Research for Health. John Wiley and Sons, 2005.





National Center for Atmospheric Research and Turtle Mountain Community College



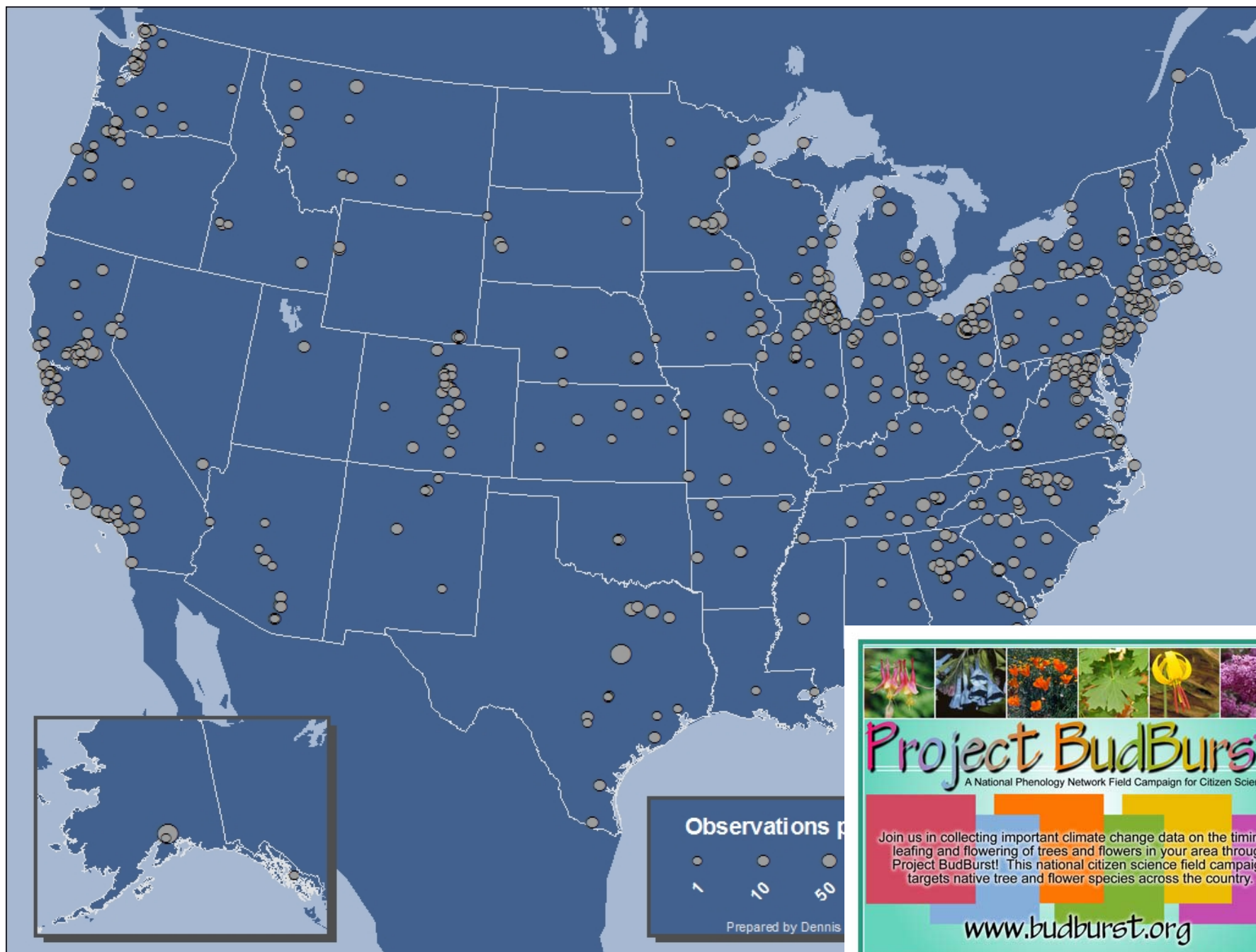
Dana Pausauskie, SOARS



**Marvin Bald Eagle Youngman,
Anishanabe**



**to understand how climate change has
influenced and will effect the life-cycle of
culturally important plants**



Project BudBurst

A National Phenology Network Field Campaign for Citizen Scientists

Join us in collecting important climate change data on the timing of leafing and flowering of trees and flowers in your area through Project BudBurst! This national citizen science field campaign targets native tree and flower species across the country.

www.budburst.org

© 2007-2009 University Corporation for Atmospheric Research Photos courtesy of USDA-NRCS PLANTS Database and USA National Phenology Network

How can informal science education push the boundaries of citizen engagement in science and move toward participatory science?

Thank you



Jeffrey Kietzmann, National Science Foundation